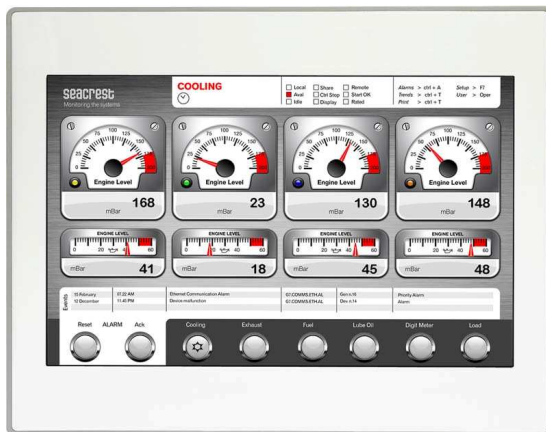


# UniOP eTOP313

The UniOP eTOP Series 300 combines state-of-the-art features and performance with an outstanding design. They are the ideal choice for HMI applications including factory and building automation. The eTOP313 features widescreen 13.3" TFT display with state-of-the-art resolution and full vector graphic capabilities. This is the ideal product for high-end HMI applications. Connections include Ethernet and USB.



- 13.3" TFT color display, CCFL backlight
- 1280x800 pixel (WXGA) resolution, 64K colors
- Advanced vector graphics
- Resistive touchscreen
- 64 MB user memory
- 10/100 Ethernet interface
- USB interface
- Connection to bus systems using optional plug-in modules
- Slim design. Mounting depth less than 50mm

## Highlights

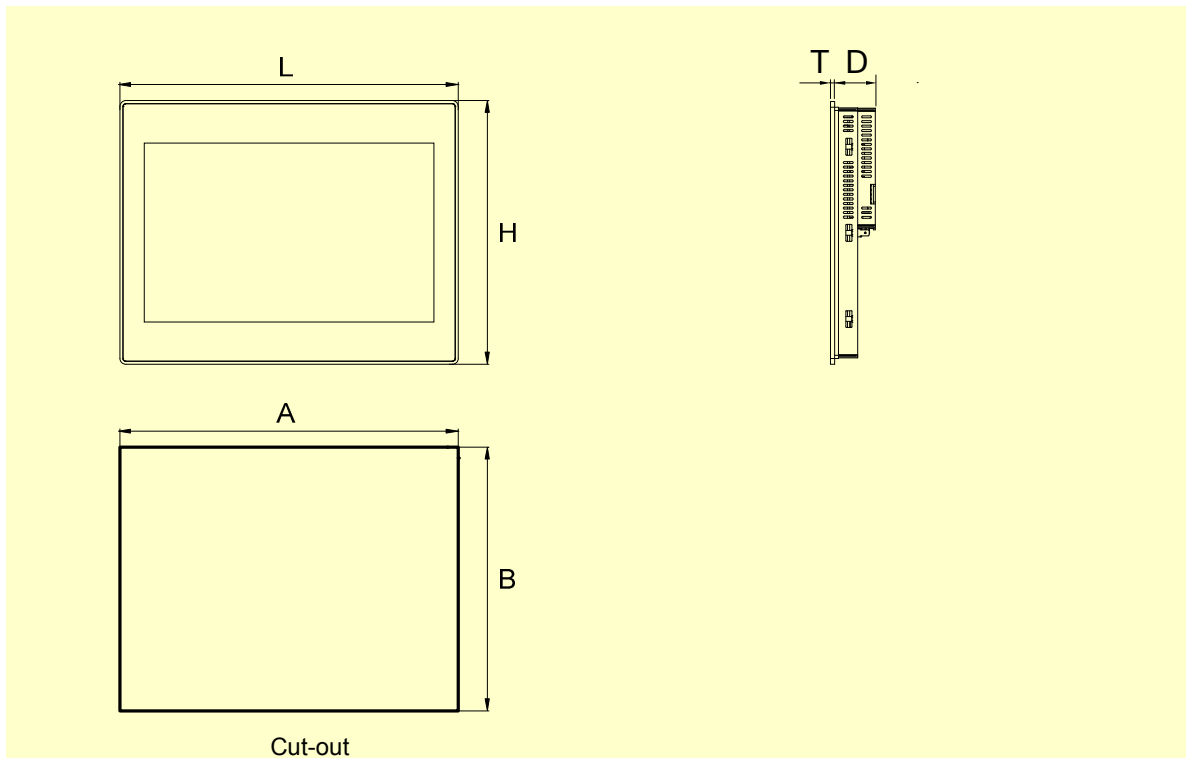
The eTOP Series 300 HMI panels are fully compatible with UniOP Designer 6 software.

- Powerful and intuitive programming with the UniOP Designer 6 software.
- Supports more than 150 communication drivers.
- Built-in Ethernet port for communication with devices, programming the HMI from Designer and retrieving data from computers.
- USB host port for the connection of flash drives. Flash drives can be used for upgrading applications and firmware.
- Optional plug-in modules for fieldbus systems and networks. Compatible with TCM and SCM modules.
- Dual-driver communication capability.
- Vector graphic capabilities including the support of multiple layers and object transparency.
- Data display in numerical, text, bargraph, analog gauges and graphic image formats. Dynamic object properties supported.
- Data acquisition and trend presentation. Trend data can be transferred to a host computer using the Ethernet connection.
- Recipe data storage. Recipe data can be transferred to a host computer using the Ethernet connection or copied to flash drives via USB connection.
- Multilanguage applications. Far East languages are supported. The number of runtime languages is limited only by the available memory. All text information in the application can be exported to files in Unicode format for easier translation.
- Powerful macro editor to configure touchscreen operation
- Alarms and historical alarm list. Alarm and event information can be printed or transferred to a host computer.
- Eight level password protection.
- Report printing to serial printer. Reports are freely configurable using Designer.
- Ethernet-based UniNet network to share data between UniOP HMIs and to serve data using UniNet OPC Server.

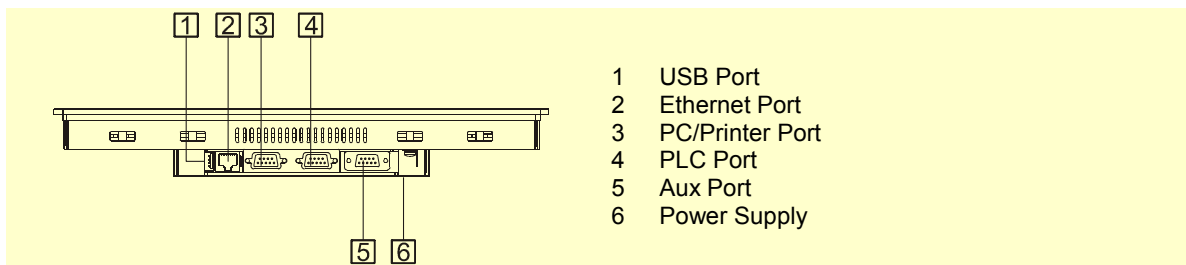
## Technical Data

<b>Display</b>		<b>Alarms</b>	
Type	TFT	Event list	1024
Resolution	1280x800, WXGA	Password	Yes
Active display area	13.3" diagonal	Hardware Real Time Clock	Yes, with battery back-up
Colors	64K	Screen saver	Yes
Backlight	CCFL	Buzzer	Yes, audible feedback for touchscreen
Brightness	250 Cd/m <sup>2</sup> typ.		
Dimming	Yes		
<b>Memory</b>		<b>Ratings</b>	
User memory	64 MB internal Flash	Power supply voltage	24 Vdc (18 to 30 Vdc)
<b>Front panel</b>		Current consumption	1.4 A at 24 Vdc(max.)
Touchscreen	Analog resistive	Fuse	Automatic
User LED indicators	1	Weight	Approx 2.5 Kg
System LED indicators	4	Battery	Rechargeable Lithium battery, not user-replaceable
<b>Interfaces</b>		<b>Environmental Conditions</b>	
Ethernet port	10/100 Mbit	Operating temperature	0 to 50 °C
USB port	Host interface, version 1.1	Storage temperature	-20 to +70 °C
PC/Printer port	RS-232, RS-485, RS-422, software configurable	Operating and storage humidity	5 – 85 % relative humidity, non-condensing
PLC port	RS-232, RS-485, RS-422, software configurable	Protection class	IP65 (front panel) IP20 (rear)
Aux port	Yes, fieldbus and controller modules	<b>Dimensions</b>	
<b>Functionality</b>		Faceplate LxH	337x267 mm
Vector graphics	Yes	Cutout AxB	326x256 mm
Object dynamics (hide/show)	Yes	Depth D+T	42mm+4mm
TrueType fonts	Yes	<b>Approvals</b>	
Dual driver capability	Yes	CE	Emission
Video input	No		EN 61000-6-4
Data acquisition and trends	Yes		Immunity
Multilanguage	Yes, number of run-time languages limited only by available memory		EN 61000-6-2
Recipe memory	Yes. Flash memory storage limited only by available memory		for installation in industrial environments
UniNet network	Client/Server		

**Dimensions**



**Connections**



**Ordering Information**

<b>Model</b>	<b>Part Number</b>	<b>Description</b>
eTOP313	ETOP313U101	13.3" TFT color touchscreen with Ethernet and USB interfaces. White front panel.
	ETOP313U201	13.3" TFT color touchscreen with Ethernet and USB interfaces. Grey front panel.
	ETOP313U301	13.3" TFT color touchscreen with Ethernet and USB interfaces. Black front panel.
PROT-15		Disposable protection foil for 12.1" and 13.3" eTOP touch panels (10 pieces).
PROT-21		Disposable protection foil for 12.1" and 13.3" eTOP touch panels (10 pieces). UV resistant.

---

**ptn0321**

**Ver. 1.3**

**Copyright © 2010-2012 Exor International S.p.A. – Verona, Italy**

Subject to change without notice.

The information contained in this document is provided for informational purposes only. While efforts were made to verify the accuracy of the information contained in this documentation, it is provided "as is" without warranty of any kind.

[www.uniop.com](http://www.uniop.com)

ptn0321-3.doc - 10.01.2012

UniOP eTOP313